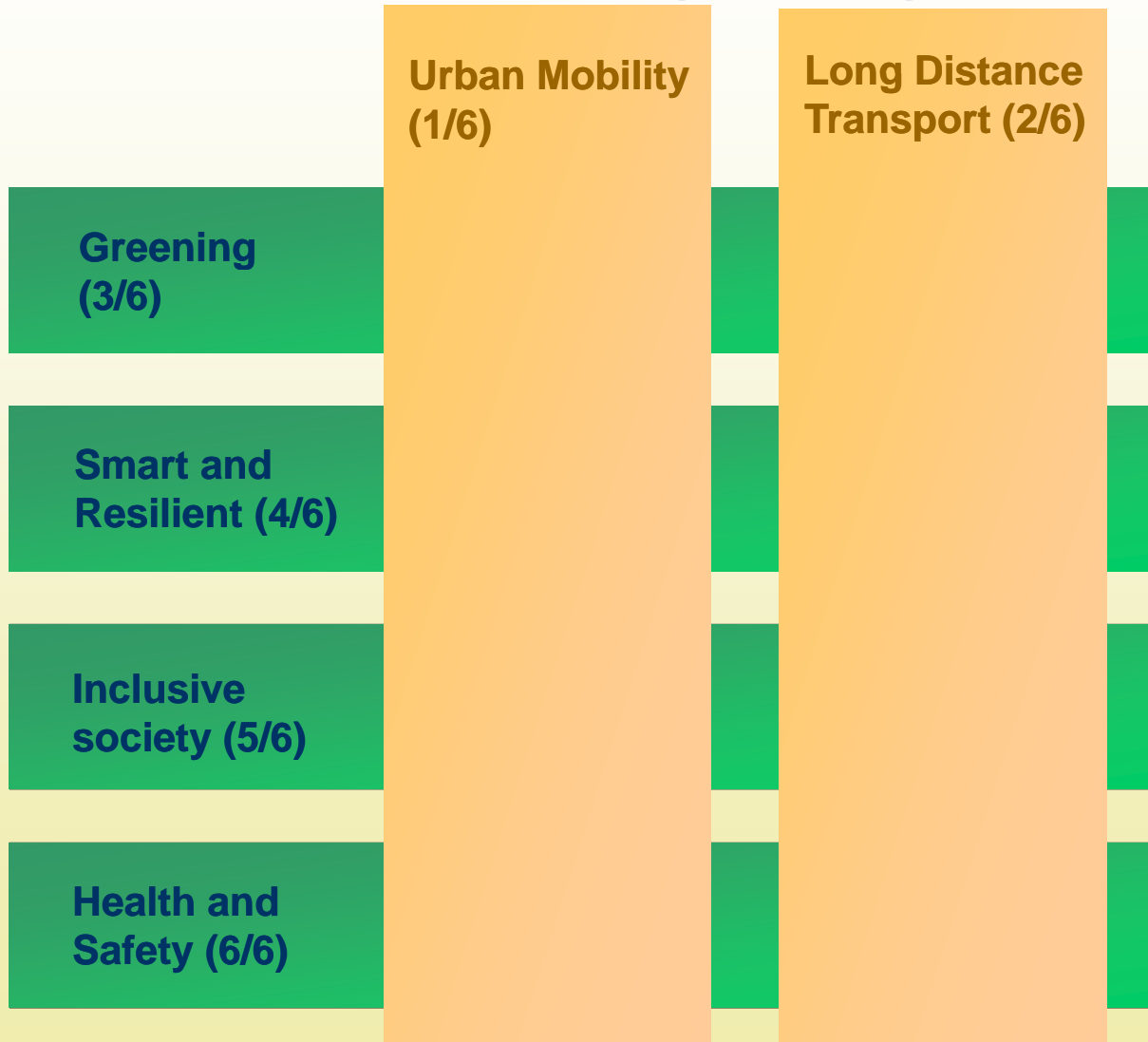




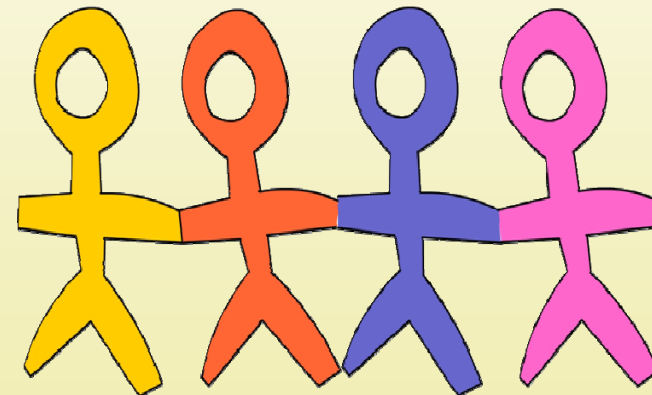
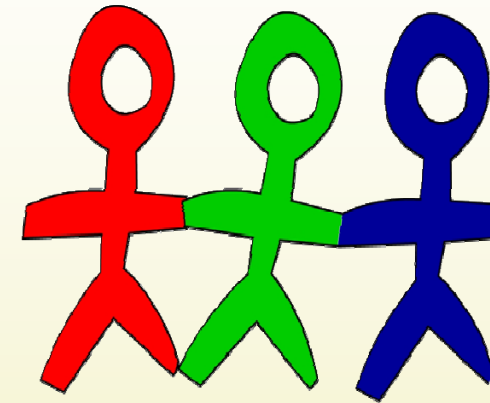
Strategic Targets

**Focus Themes
(Europe 2020 strategy)**



PRIORITY 5- INFRASTRUCTURES IN AN INCLUSIVE SOCIETY

- 5.1. Infrastructures for everybody**
- 5.2. Fostering Social Cohesion**
- 5.3. Inclusive Safety**
- 5.4. Inclusive e-Infrastructure**





❑ SOCIETAL NEEDS

- Sensitive or vulnerable groups have to have **access to services** and facilities .
- Provide an **accessible and affordable transport system**.
- Infrastructure design should not focus solely on technical efficiency and lowest cost.
- It is especially important to consider the **nodes for transport**.
- Consensus among the different members of a community as well as the perception of **belonging to a common project**.
- **Foster social cohesion**.





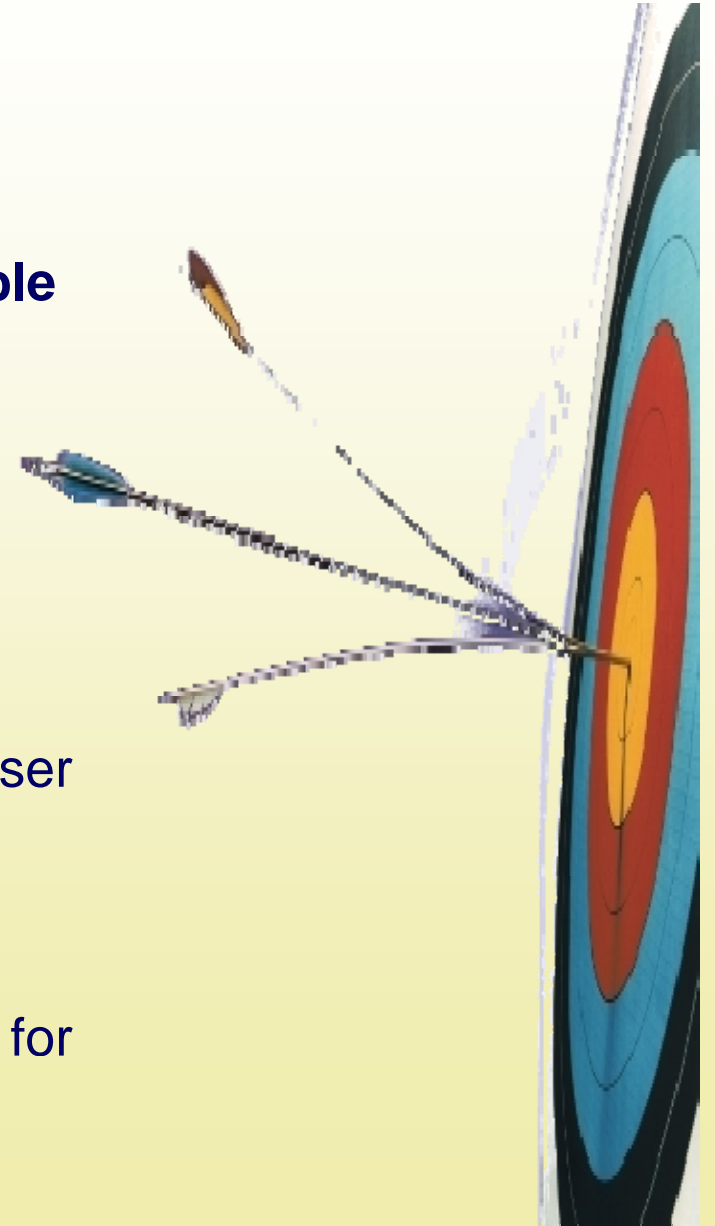
❑ SOCIETAL NEEDS

- From the point of view of users and of **sensitive groups as affected people**.
- The **safety of the infrastructures** has to consider the diversity of the users and the shared use of the infrastructure.
- **Policy initiatives** that address personal safety concerns.
- Adapt the application of the **new information and communication** technologies to the capacities of sensitive groups.
- Adapt the user's interfaces to people affected by the **digital divide or with reduced capacities**.



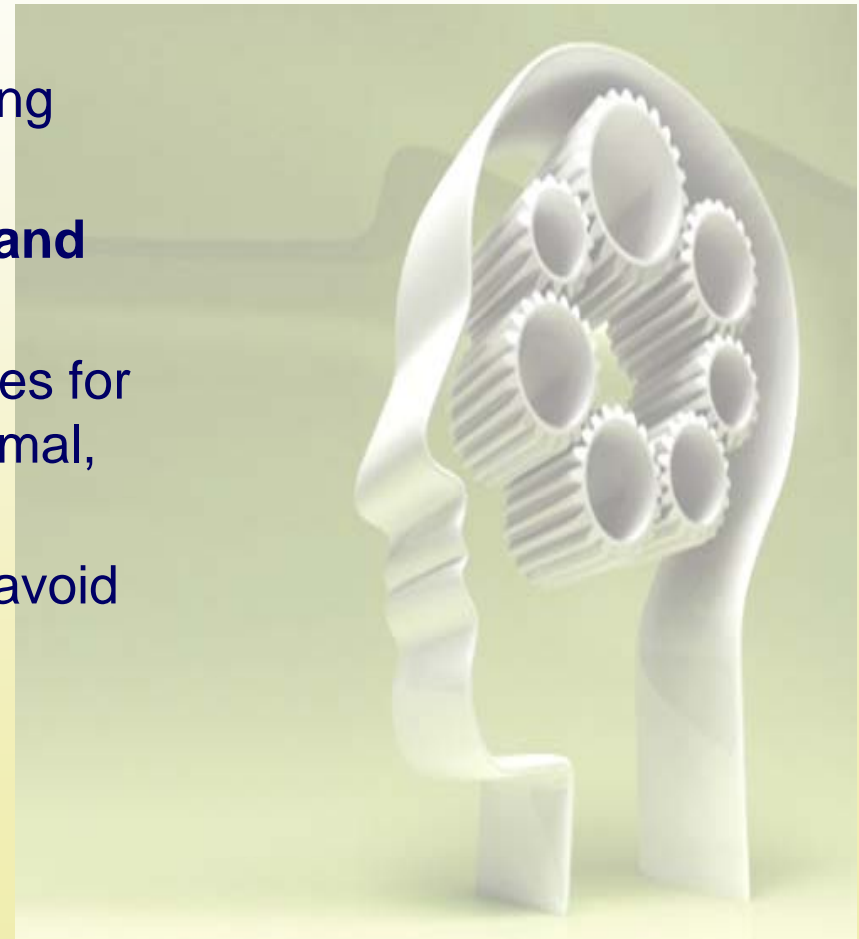
❑ OBJECTIVES OF THE RESEARCH

- All facilities are directly and **easily accessible and affordable** for sensitive groups.
- **Divisions in cities** and urban areas are avoiding.
- **Safer infrastructures** for older drivers, pedestrians, cyclists and users of powered wheelchairs and scooters.
- Provide the **maximum information** to the user allowing better access to infrastructure and therefore improving their mobility and independence.
- Increasing the **operability** of infrastructures for the sensitive groups.



□ RESEARCH ITEMS

- Design and build infrastructures taking into account the needs of all users.
- Understand the **demands, desires and needs** for all the users,
- Innovative technologies and strategies for enhancement of urban comfort (thermal, acoustic, visual... comfort).
- New technologies and strategies to avoid cities and urban divisions.
- Objective and subjective relations between **stimulus and perceptual behavior**.



□ RESEARCH ITEMS

- Identify **new strategies** for addressing the mobility and safety needs.
- Development of **innovative concepts** for safe infrastructures.
- Development of ICT Technologies and standards for **cross-national interoperability**.
- Enrichment of the **information on the infrastructure itself** .
- **Better understanding of the impact** of infrastructures on health, comfort and perception of safety.
- Development of sensors, actuators and systems that **anticipate human perception**.





❑ IMPACTS OF THE RESEARCH ITEMS

- **Increase of the integration** of sensitive groups in the community life.
- **Improving quality of life** for sensitive users of infrastructure in urban and interurban environments.
- **Enhanced land-use planning** and sustainable communities.
- **Reduction of fatalities and casualties** related to infrastructures uses.
- **Increasing the use** of infrastructures by sensitive groups.
- **Reduction of accidents**
- **Reduction of effects** associated to infrastructures accidents





Research for Future
Infrastructure Networks
in Europe
refine

Priority 5: Infrastructure in an Inclusive Society



THANK YOU for your attention!

laura.tordera@ferrovial.es

alberto.bonilla@tecnalia.com

ferrovial
agroman

tecnalia  Inspiring
Business