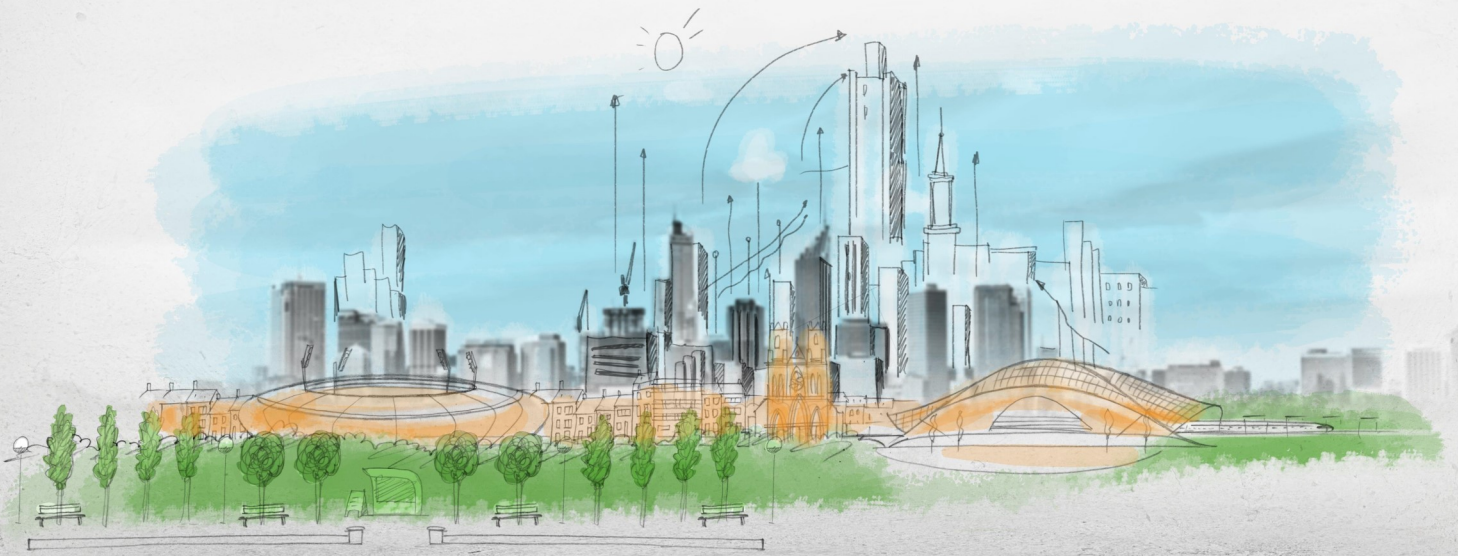


# 7<sup>th</sup> ECTP Conference INNOVATIVE BUILT ENVIRONMENT



**November 17-18, 2016**

**Palais des Beaux-Arts /  
Center for Fine Arts**



**ENERGY EFFICIENT BUILDINGS**

**HERITAGE & REGENERATION**

**ACTIVE AGEING & DESIGN**

**MATERIALS & SUSTAINABILITY**

**INFRASTRUCTURE & MOBILITY**



Organised by:  
the **European Construction, Built Environment and Energy  
Efficient Buildings  
Technology Platform A.I.S.B.L.**



# 7<sup>th</sup> ECTP Conference

## INNOVATIVE BUILT ENVIRONMENT

### Overview

The 7<sup>th</sup> ECTP open conference will take place in Brussels on 17-18 November. This event will be dedicated to present and discuss current and anticipated innovation in the built environment field. Plenary sessions with high-level speakers from academia, industry and the European Commission will introduce the global scheme and visions from various stakeholders. Meanwhile, thematic parallel sessions will address diverse specific issues under the five current challenges of the ECTP. A hall for booths and posters will exhibit examples of innovation expected from European projects.

### Provisional Programme

#### November 17, 2016

- 09:15 Registration and Welcome Coffee  
10:00 Opening & Plenary Session
- Welcome speeches by ECTP and EC
  - Speeches on major transversal issues such as the role of ECTP to foster impacts of projects, the international and regional approaches, the cross-cutting and value chain approaches, the R&I industrial investments...
- 13:00 Thematic parallel sessions (see below)  
20:00 Conference dinner

#### November 18, 2016

- 09:00 Thematic parallel sessions (see below)  
13:30 Strategies for an Innovative Built Environment
- Examples of stakeholders' strategies in various fields
  - Round Table
- 16:00 Closing

**Thematic parallel sessions** will be dedicated to:

- Challenges ahead: new technical solutions, business models and regulatory frameworks to accelerate the renovation of Europe's building stock
- Positive Energy Blocks for a Sustainable Built Environment
- The innovation for the future transport infrastructure
- Materials and Sustainability Innovation in Construction
- The present and future of Cultural Heritage and Urban Regeneration research
- Enabling Environment for Active Ageing: smart spatial models, houses, and technologies in a smart civil society
- National Technology Platforms: The innovation from the countries toward Europe
- Info session and B2B workshop about fostering impacts of projects (organised the Eeb-CA2 Coordination and Support Action funded by the EC)

### Exhibition Opportunities

Booths will be made available for exhibitors ready to show innovation cases.

**Registration** on line at:

<https://fr.xing-events.com/ECTPConference2016.html>

### Further information

Please email the Conference secretariat: [conference@ectp.org](mailto:conference@ectp.org)

More about ECTP at: [www.ectp.org](http://www.ectp.org)

### Innovative Built Environment

The built environment serves a lot of industries and services (transport, energy, tertiary sector, dwelling, health & care, the silver economy). It therefore impacts the performance of many sectors and our major living environment; it is the place (homes, offices, transport infrastructures, cultural places, schools & universities, hospitals) where we spend more than 80% of our time. Its quality as such directly impacts the quality of our life. Last but not least, paramount challenges such as energy, climate change, efficiency, safety and, more generally, sustainability have been proven to be of the utmost importance for the built environment, and need to be tackled within an integrated approach.

### Energy Efficient Buildings

Energy efficiency in buildings is a crucial challenge for Europe since existing buildings represent the highest amount of energy consumed in the EU (about 40%). This sector is also the main contributor to GHG emissions (about 36% of the EU total CO<sub>2</sub> emissions).

### Infrastructure and Mobility

Green, smart and cost-effective infrastructure should be developed in order to further increase the performance of multimodal transport. Continuous, efficient and resilient quality of service will make infrastructure a major contributor to improving the transport system, but the impact on the environment and on energy consumption should be reconsidered and adequate measures should be implemented to reduce the negative impacts and increase a positive contribution.

### Materials and Sustainability

Materials constitute the basic element to construct the various components of the built environment. Durability, environmental impact and comfort of living are some of the keywords to be considered to tackle the sustainability issues related to materials.

### Heritage and Regeneration

Built cultural heritage has a high societal importance: quality of life in cities, the feeling of social safety and cultural identity are closely related with the presence of heritage buildings. It improves welfare and the wellbeing of people in urban areas.

### Active Ageing and Design

The number of people over 60 will increase from 900 million to two billion between 2015 and 2050 (moving from 2% to 22% of the global population). The built environment, enriched with new opportunities of digital innovation, matters crucially in enabling new forms of support and creative expression for all ages.



# ECTP

## INNOVATIVE BUILT ENVIRONMENT